

# MONTHLY MEMBERSHIP PROGRESS REPORT

LOCATION REP OF SRI LANKA

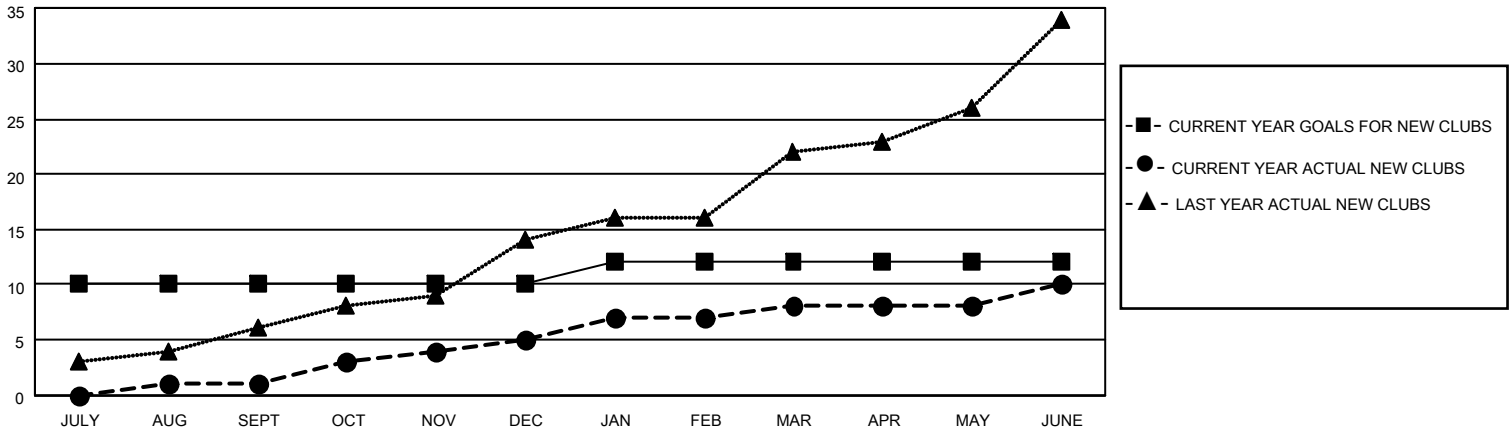
District 306 C1

Results as of: 6/30/2023

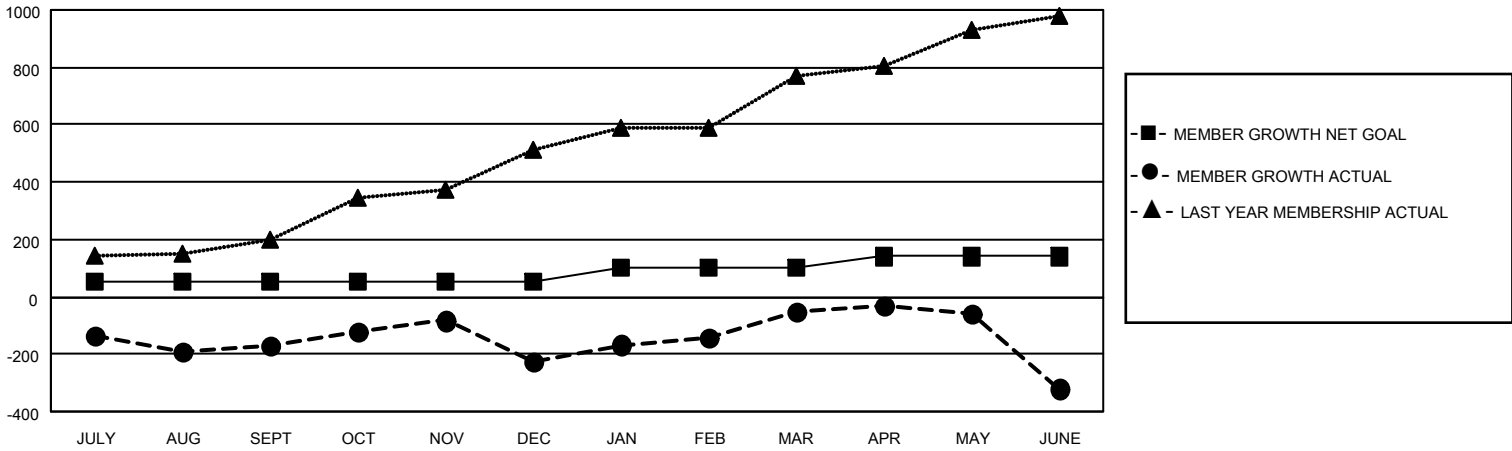
Clubs			
RESULTS FOR 2022-2023			
QUARTER	NEW CLUB GOAL	NEW CLUBS	DROPPED CLUBS
JULY/AUG/SEPT	10	1	4
OCT/NOV/DEC	0	4	2
JAN/FEB/MAR	2	3	0
APR/MAY/JUNE	0	2	0

Members			
RESULTS FOR 2022-2023			
QUARTER	MEMBER GROWTH NET GOAL	MEMBER GROWTH ACTUAL	DROPPED MEMBERS ACTUAL (including transfers)
JULY/AUG/SEPT	50	209	363
OCT/NOV/DEC	0	346	379
JAN/FEB/MAR	50	277	64
APR/MAY/JUNE	40	131	379

**GOALS AND ACTUAL NEW CLUBS CUMULATIVE**



**GOALS AND ACTUAL MEMBERS CUMULATIVE**



**DROPPED CLUBS: 6**

123 CLUBS OF 152 ADDED 1 OR MORE NEW MEMBERS

GENDER DISTRIBUTION

MALE	2,830 (75.99%)
FEMALE	894 (24.01%)
NON BINARY	0 (0.00%)
PREFER NOT TO ANSWER	0 (0.00%)

DROPPED MEMBERS

DECEASED	9
CLUB CANCELLED	71
OTHER	1,105
<b>TOTAL</b>	<b>1,185</b>

[CLICK HERE FOR CUMULATIVE MEMBERSHIP DATA](#)

TOTAL FAMILY UNIT MEMBERS 1,395

FAMILY MEMBERS PAYING HALF DUES 846